

“Mach3 USB Motion Card” Driver reinstalling in Windows 10

“Mach3 USB Motion Card” Driver reinstalling in Windows 10

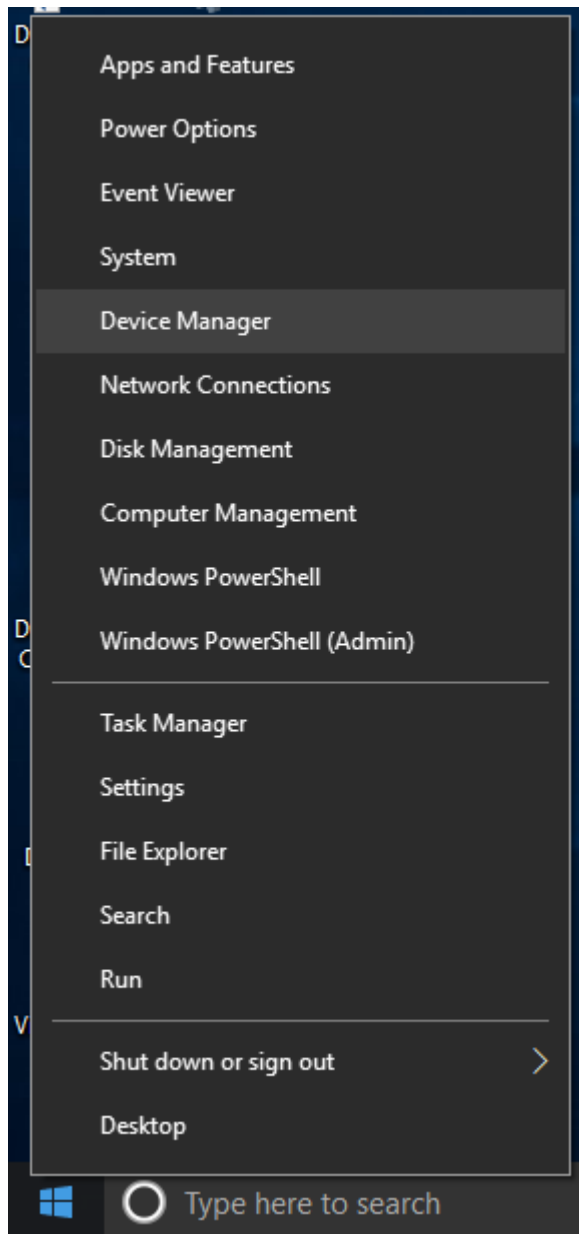
Ver20170818

Symptoms

In Windows 10, your device is always kept up-to-date to have the latest features and fixes. Drivers are installed automatically so that you don't have to select which updates are needed. This will cause “Mach3 USB Motion Card” to not work correctly. In this situation, you can manually select the correct driver.

Resolution

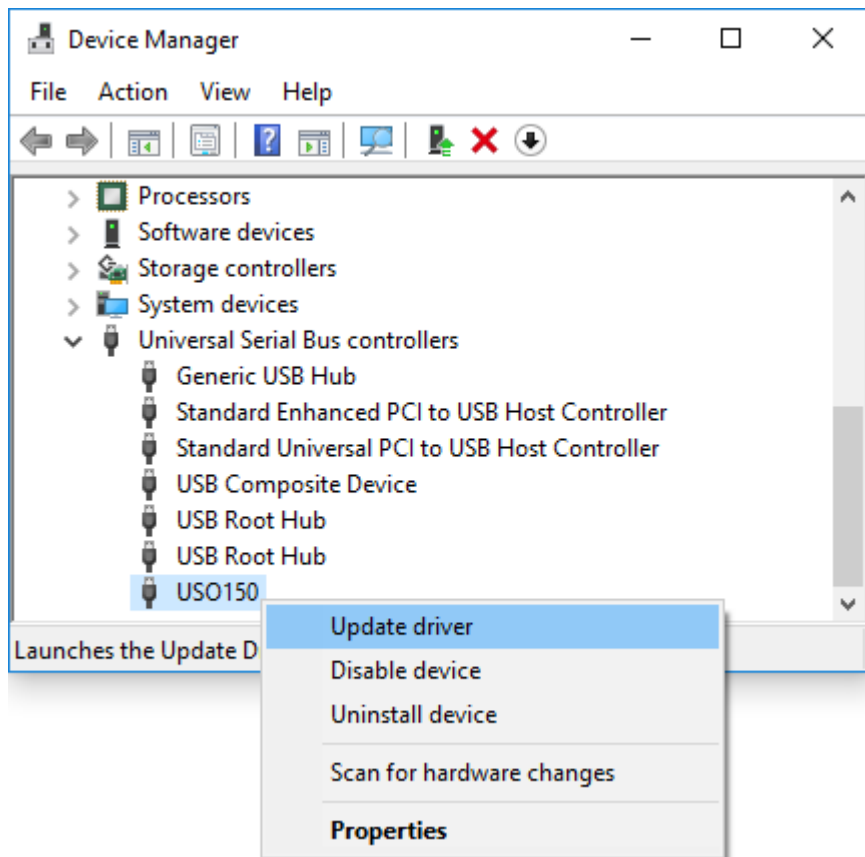
Start Device Manager. To do this, press and hold (or right-click) the lower-left corner of the desktop, and then select Device Manager.



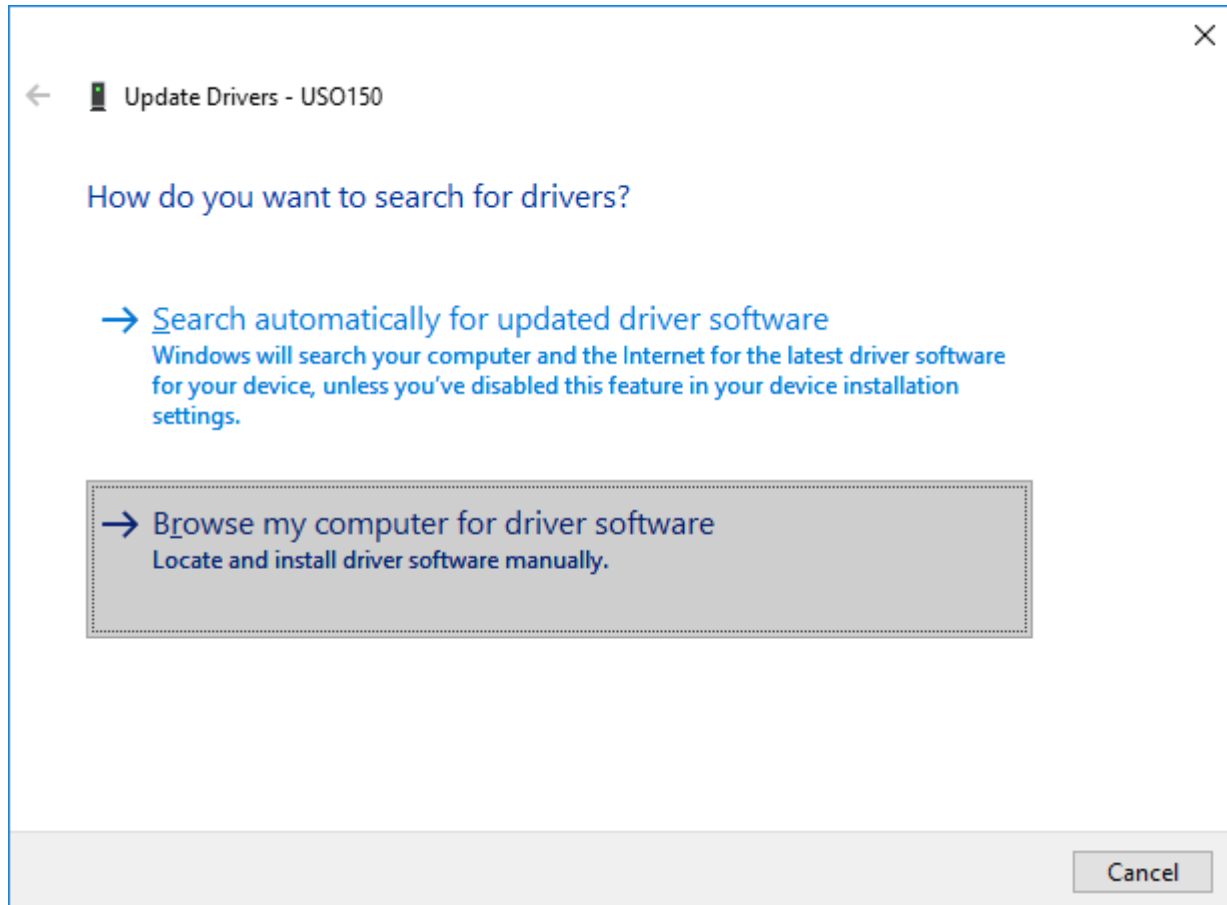
“Mach3 USB Motion Card” Driver reinstalling in Windows 10

Locate and right-click the “USO150” driver, and then select Properties, then follow the steps below.

(1)

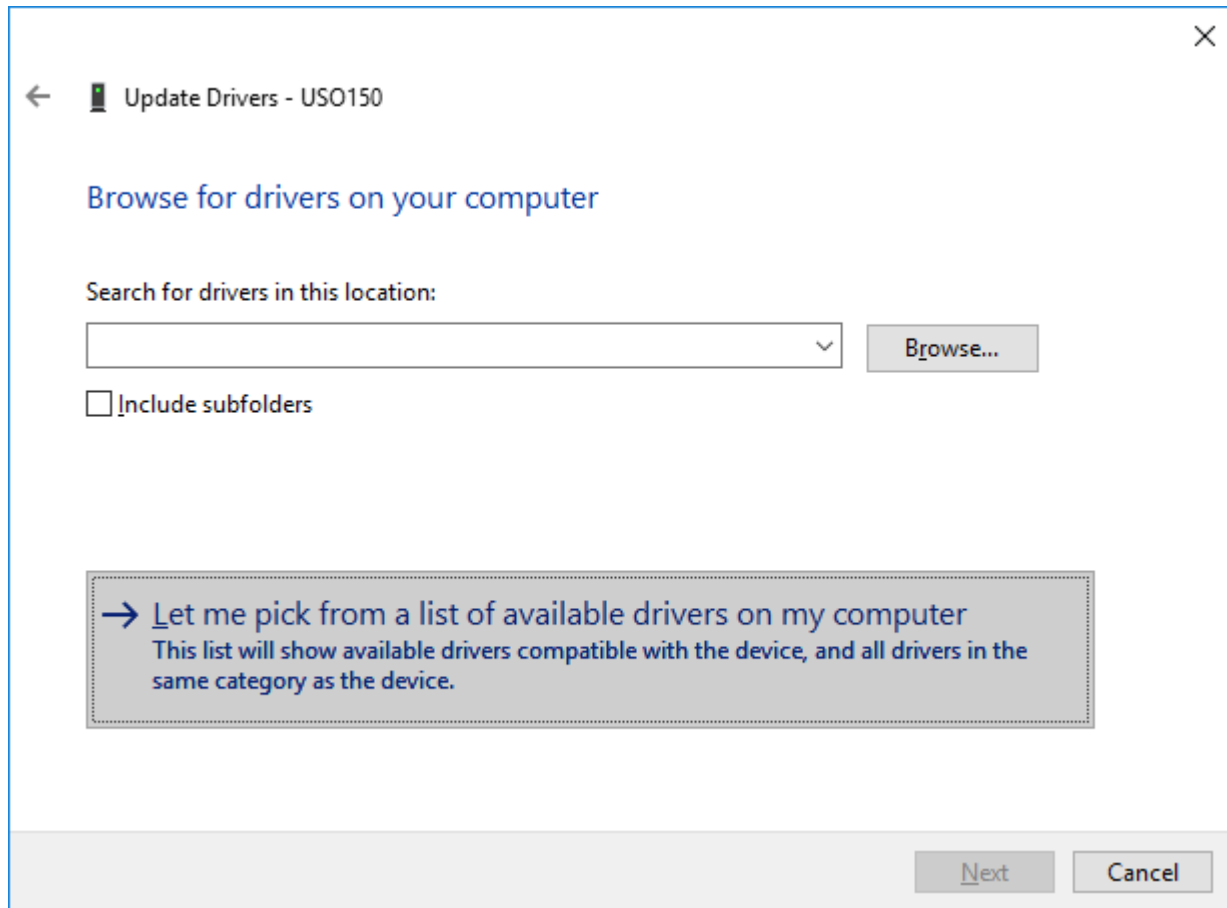


(2)

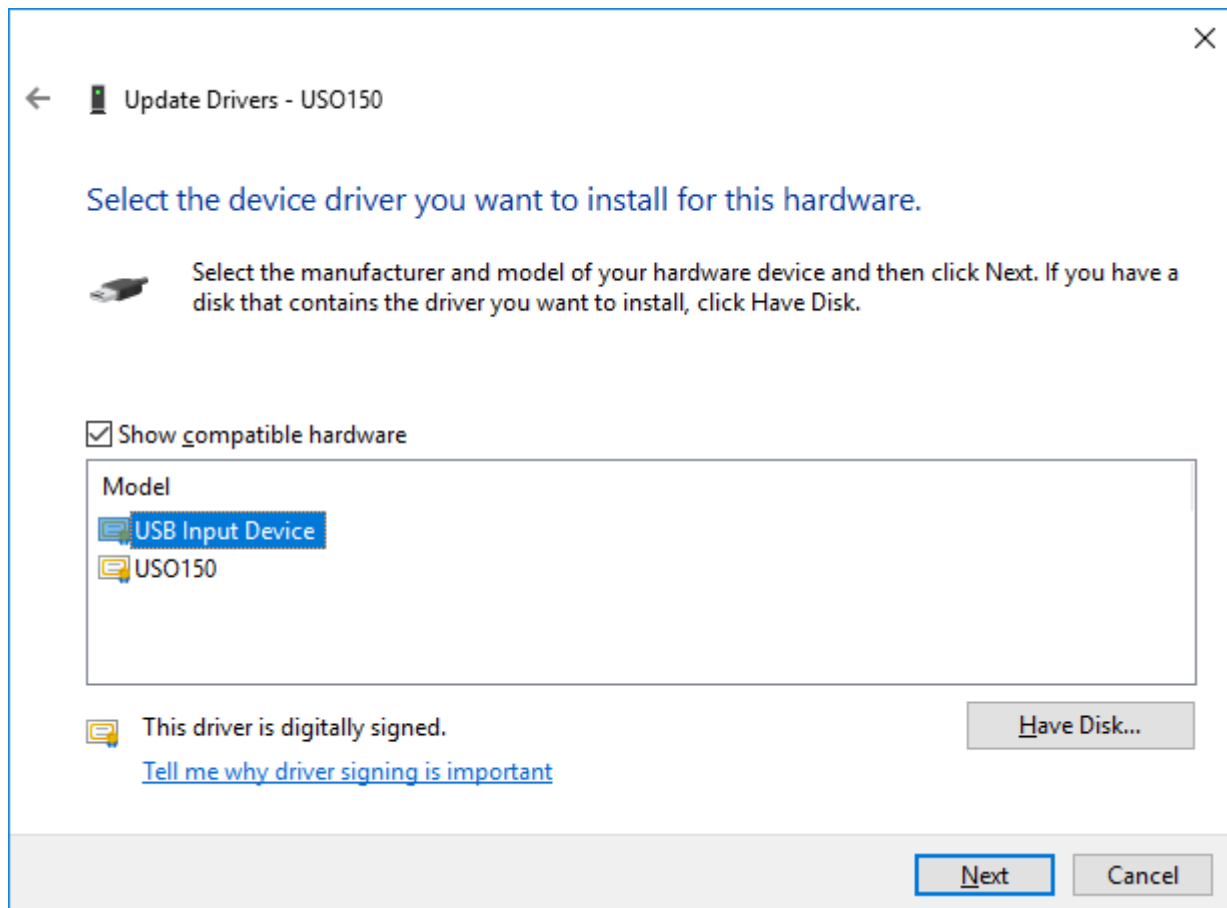


“Mach3 USB Motion Card” Driver reinstalling in Windows 10

(3)



(4)



“Mach3 USB Motion Card” Driver reinstalling in Windows 10

(5)

